

Dispensing Peristaltic Pump

LabF1, LabF3, LabF6



Medicine and chemical dispensing, such as oral liquid, diagnostic reagents.

Cosmetic dispensing, such as perfume, lip gloss.

Accessories



① Filling Countersunk

② Filling Nozzle

③ Foot Pedal Switch



Handling Dispenser

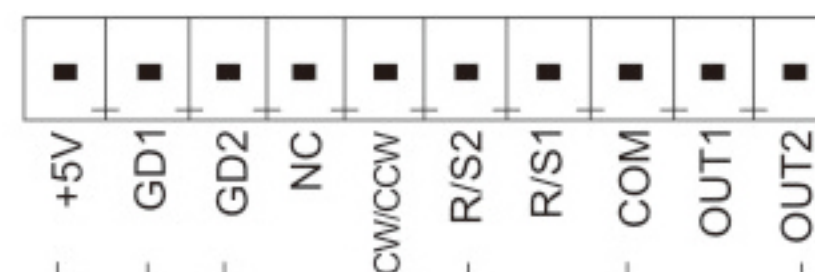
- Based on ergonomics engineering design
- Elegant appearance

Dispensing Peristaltic Pump

Features

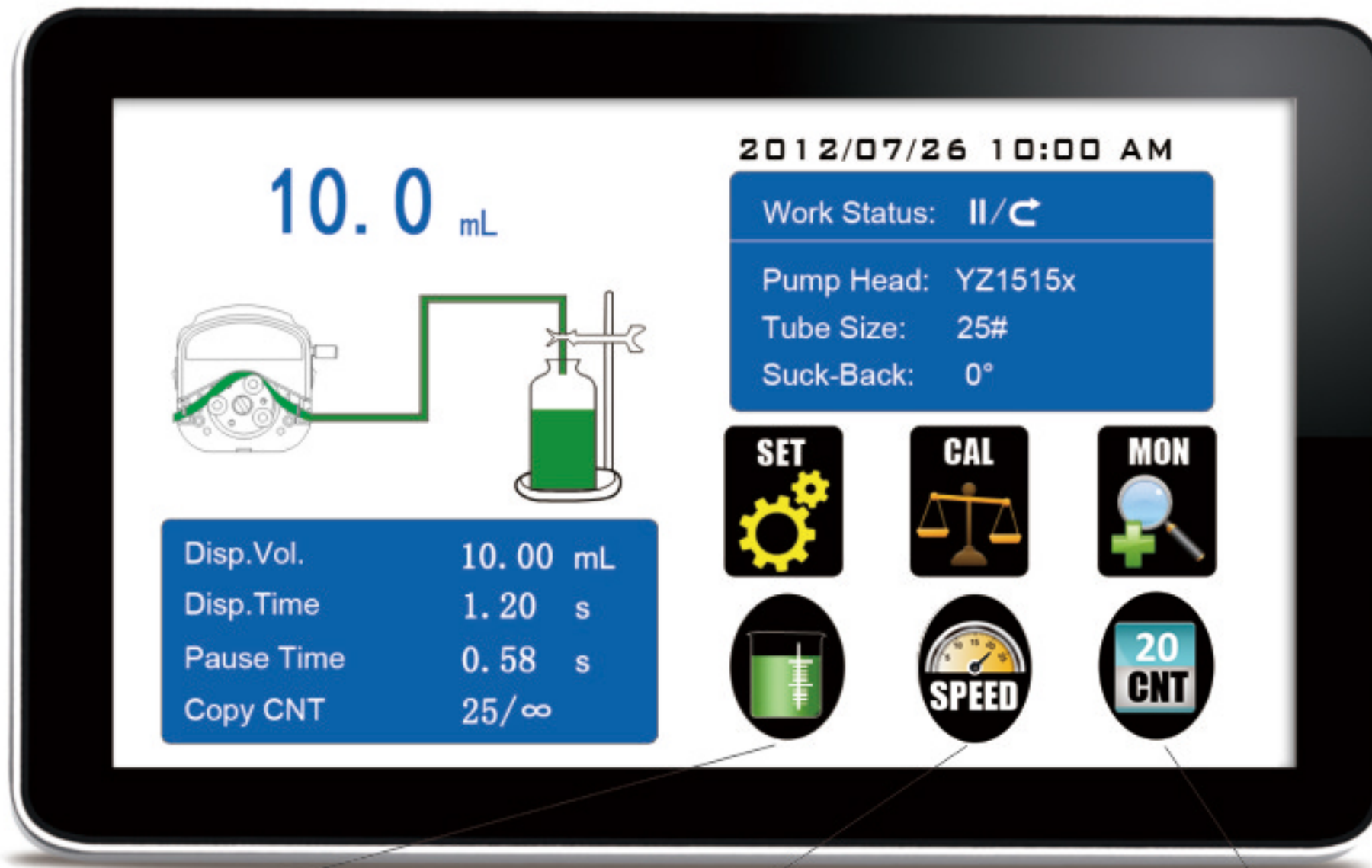
- Imported 4.3" industrial grade color LCD screen display, with touch screen control.
- Can preset dispensing volume, dispensing time, pause time and copy numbers.
- With intelligent calibration function and online micro adjusting function.
- The pump can store 60 commonly used filling modes.
- Back suction angle setting, avoid liquid drop off when the pump stops working.
- New flow rate mode, can be used for continuous transferring.
- Can communicate with balance, closed-loop control.

External Control Schematic Diagram

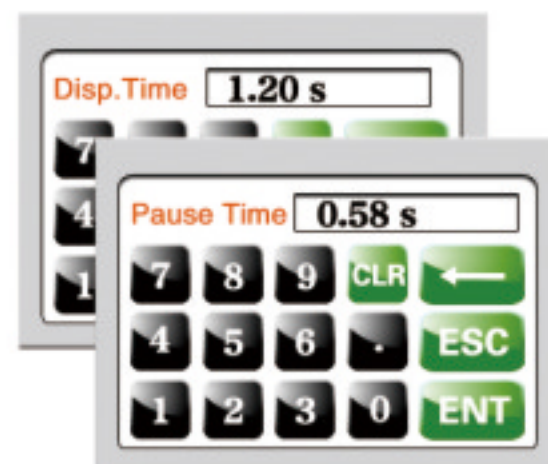


Technical Specifications			
Flow rate range	0.00166~570mL/min	Keypad lifetime	300,000 times
Speed range	1-600rpm	Start/stop, direction signal	Passive switch signal, such as foot pedal switch Active switch signal: 5V, 12V and 24V for option
Speed resolution	0.01rpm	Output interface	Output motor working status (Open-Collector output)
Dispensing volume range	0.1-9999.99mL	Communication interface	RS232, RS485 support Modbus protocol (RTU mode)
Dispensing volume resolution	0.01mL	Power supply	AC 220V±10% 50Hz/60Hz (Standard) AC 110V±10% 50Hz/60Hz (Optional)
Dispensing time	0.1-9999.99s	Outlet pressure	0.1Mpa(0.8~1.0mm wall thickness tubing) 0.1~0.27Mpa(1.6~2.4mm wall thickness tubing)
Pause time	0.1-9999.99s	Drive dimension (L×W×H)	261.4×157.3×236.9 mm
Time resolution	0.01s	Drive weight	LabF Series: 4.40 kg
Copy numbers	1-9999 times, setting '0' means unlimited	Power consumption	<50W
Back suction angle	0-360°	Condition temperature	0-40°C
Dispensing accuracy	<±0.5%	Relative humidity	< 80%
Motor type	Stepper motor	IP rate	IP31
Display	Industrial grade 4.3" color LCD display		
Control method	Touch screen and Mechanical keypad		

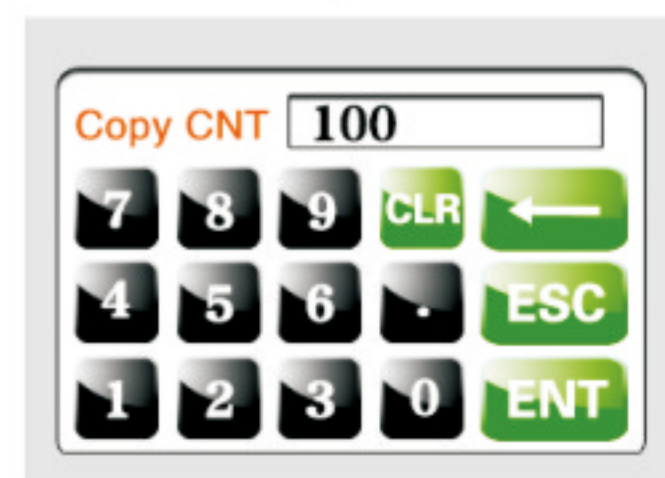
Product Composition and Flow Rate Range					
Dispensing Peristaltic Pump		Pump Head & Flow Rates (mL/min)			
		YZ1515x	YZ2515x	MC1~MC12(10)	MC1~MC12(6)
Drive & speed	Tubing	13#, 14#, 19#, 16# 25#, 17#, 18#	15#, 24#	Inner diameter: 0.13-3.17mm Wall thickness: 0.8-1mm	
LabF1	1-150rpm	0.07~570	1.7~435	0.00166-49(suggestion working speed≤150rpm)	0.00185-65(suggestion working speed≤150rpm)



Dispensing volume interface



Dispensing time and pause time interface



Copy numbers interface